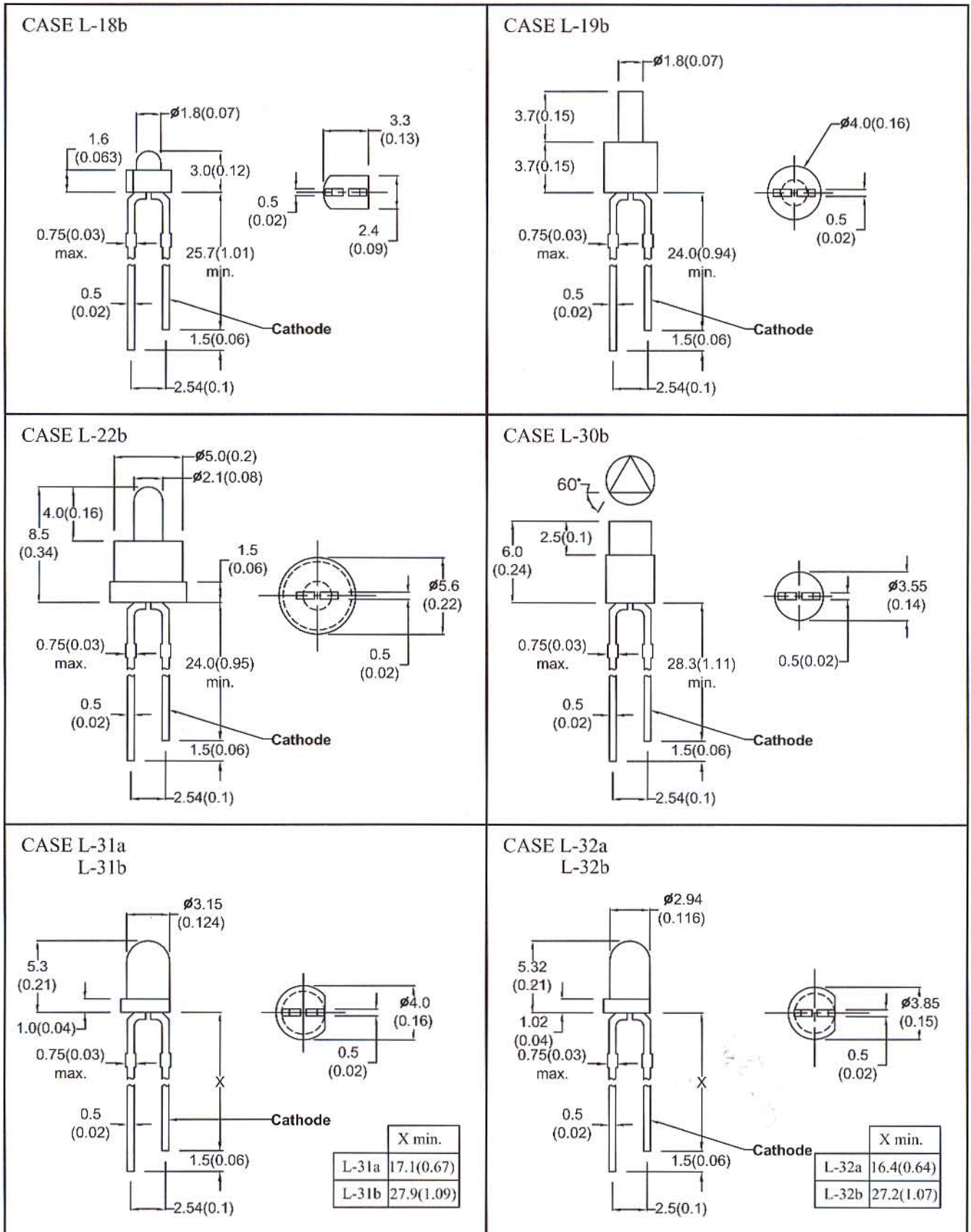
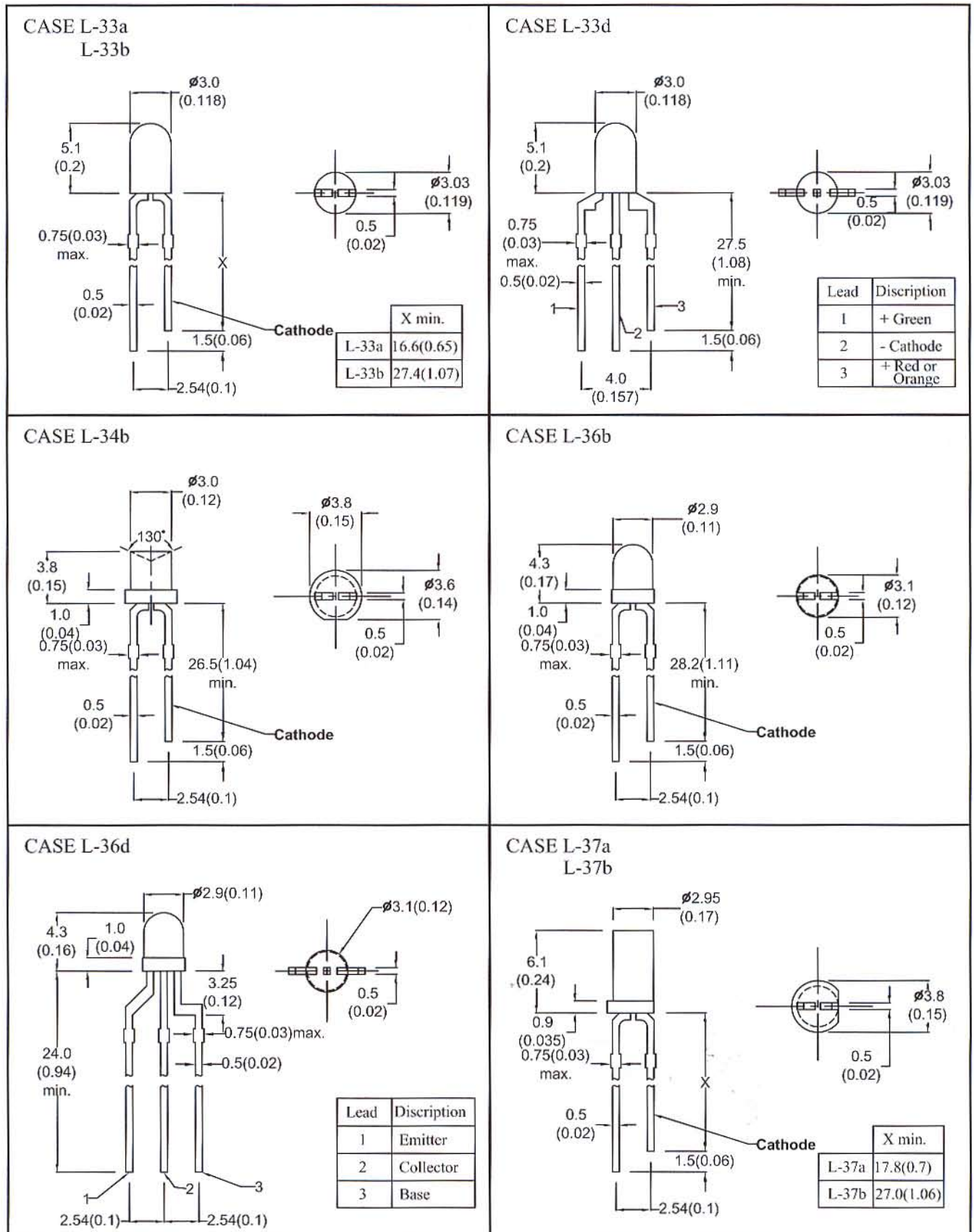


# Mechanical Outlines - LED



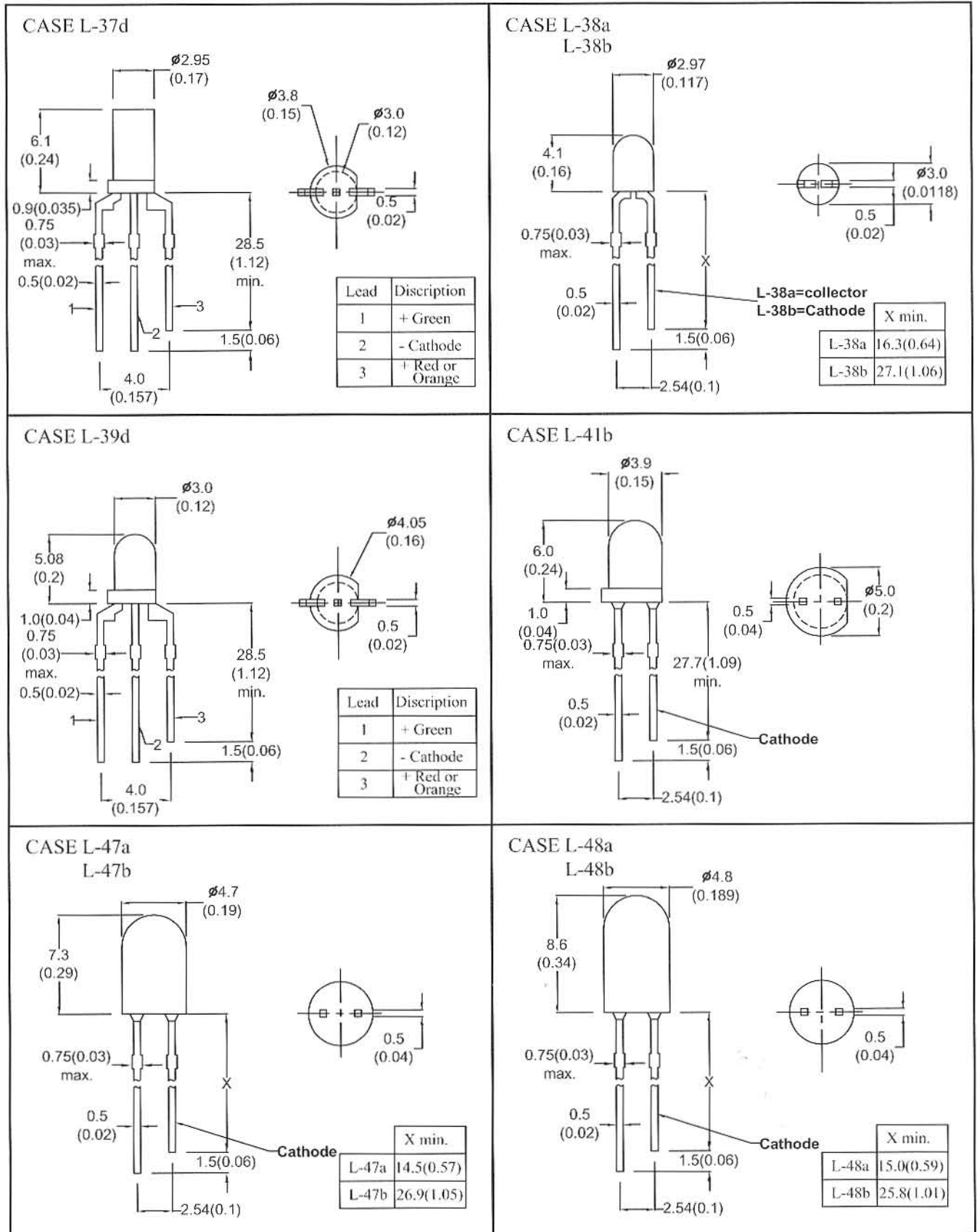
Unit : mm (inch), Tolerance : +/- 0.3mm (0.012inch), No scale

# Mechanical Outlines - LED



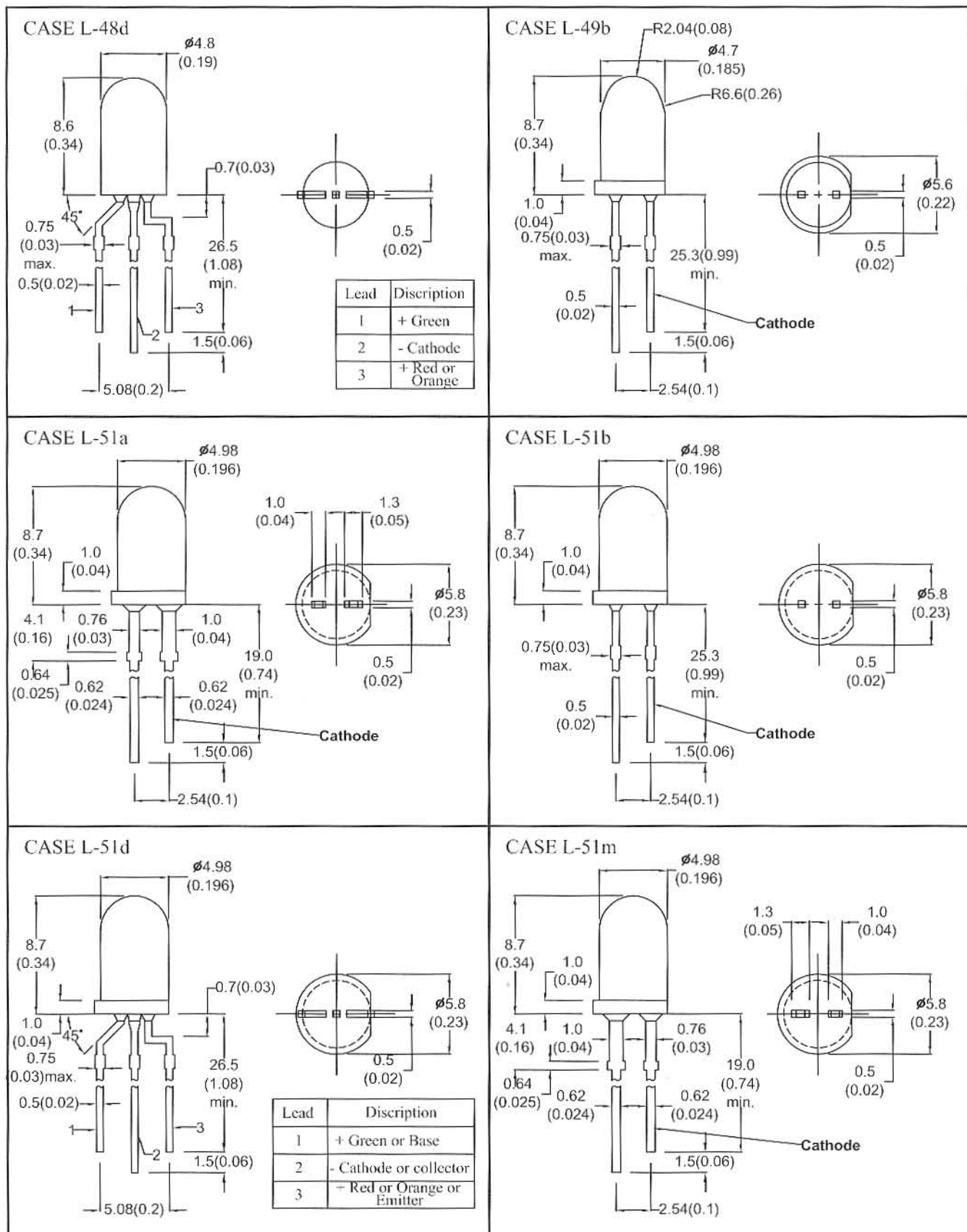
Unit : mm (inch), Tolerance : +/- 0.3mm (0.012inch), No scale

# Mechanical Outlines - LED



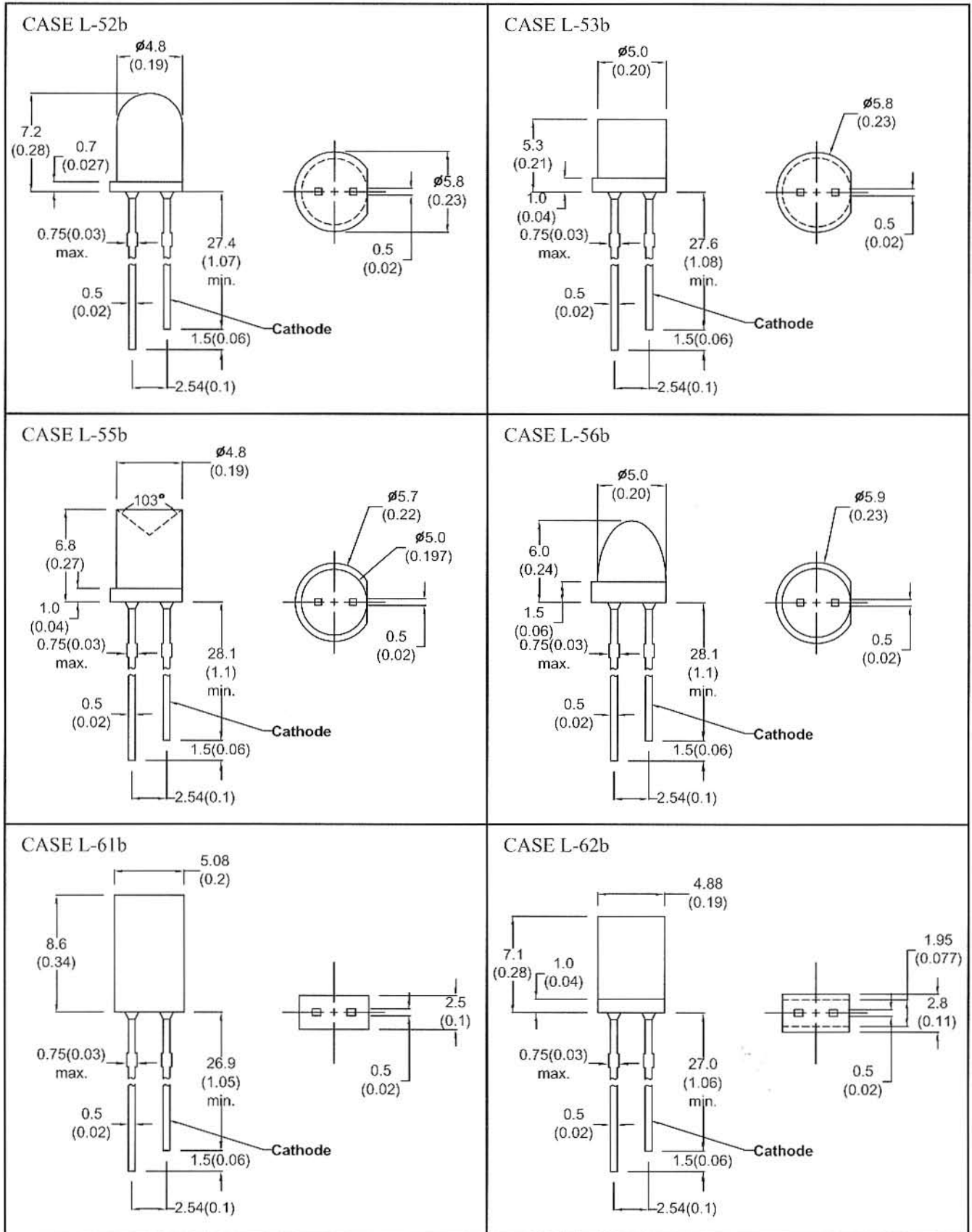
Unit : mm (inch), Tolerance : +/- 0.3mm (0.012inch), No scale

# Mechanical Outlines - LED



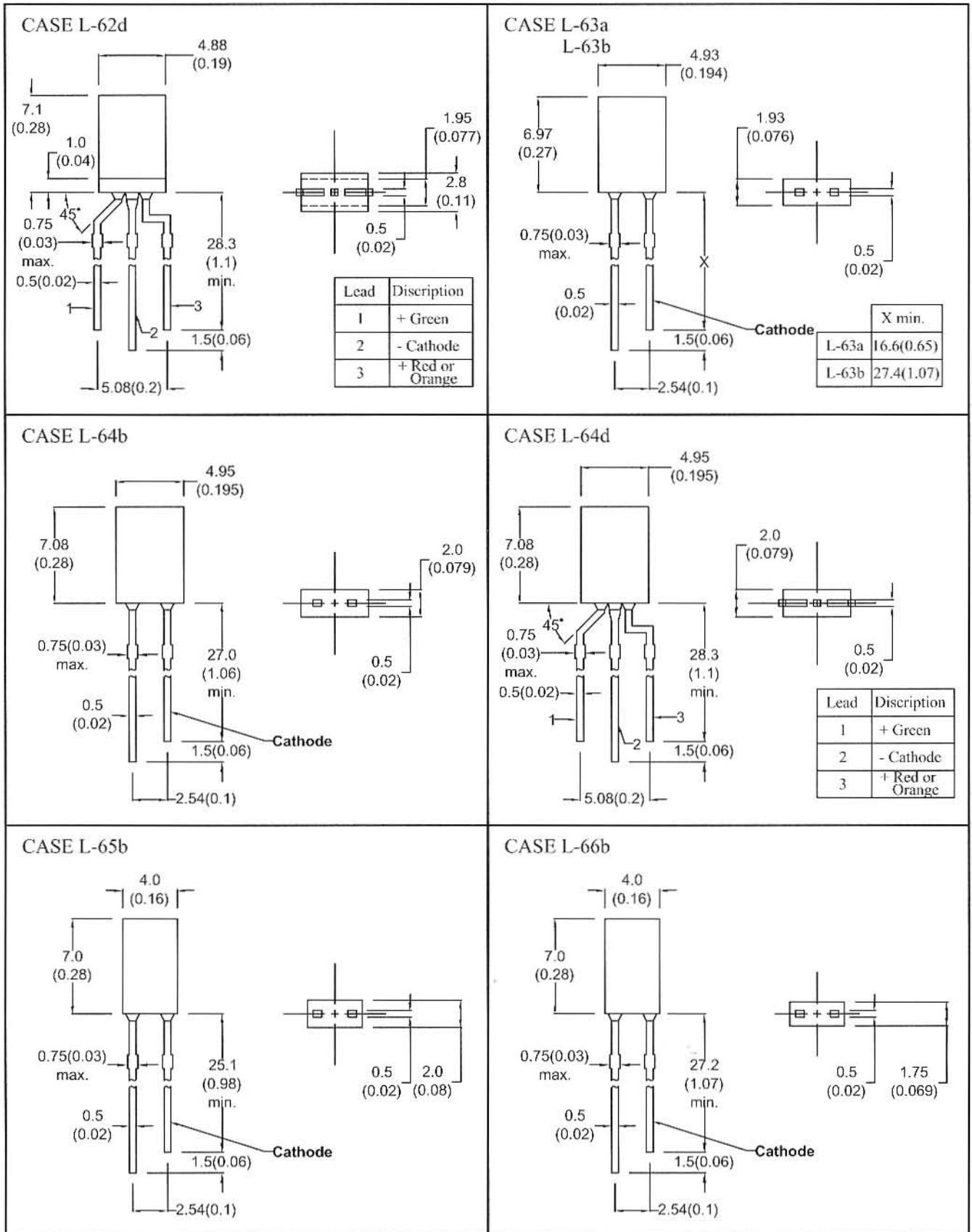
Unit : mm (inch), Tolerance : +/- 0.3mm (0.012inch), No scale

# Mechanical Outlines - LED



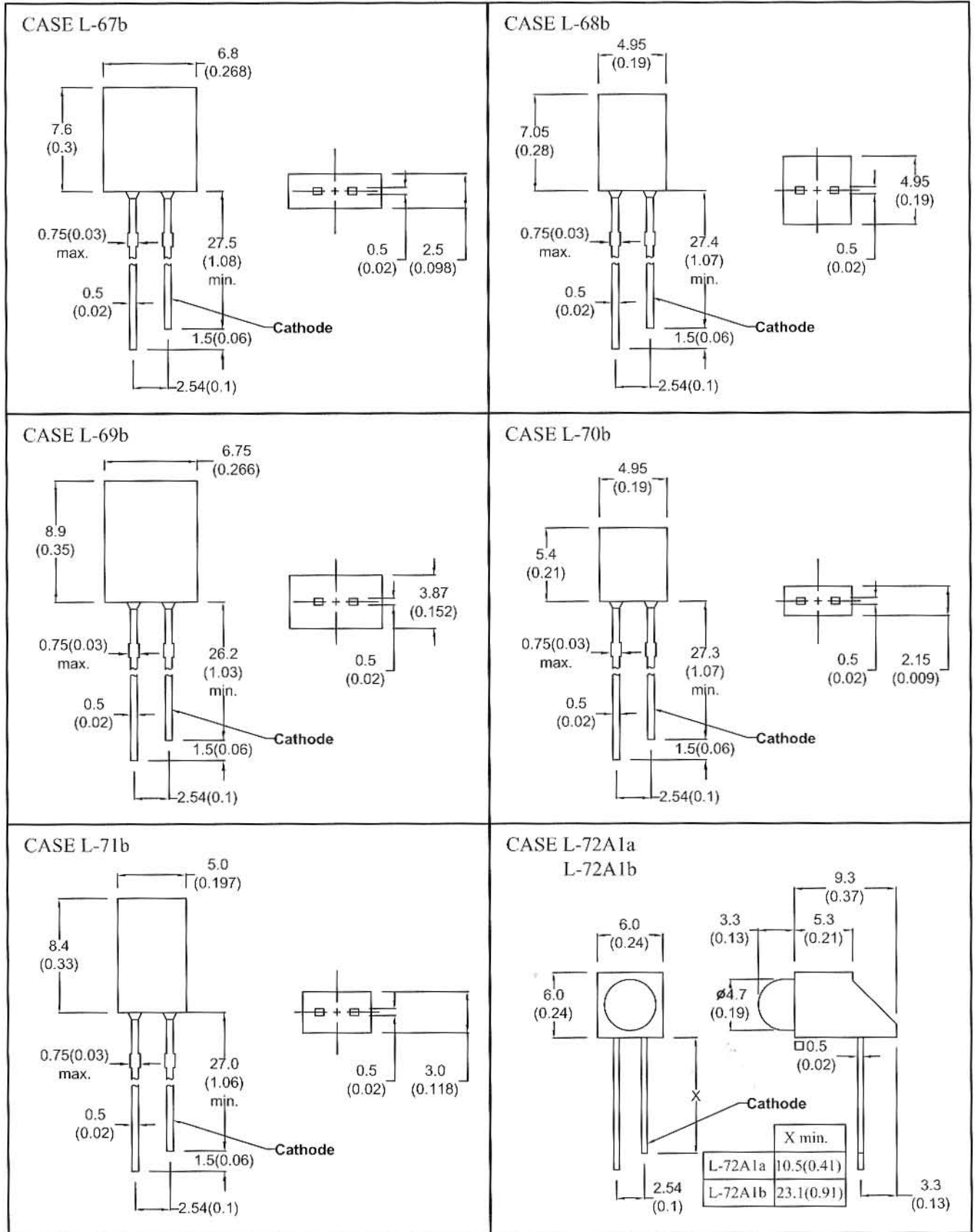
Unit : mm (inch), Tolerance : +/- 0.3mm (0.012inch), No scale

# Mechanical Outlines - LED



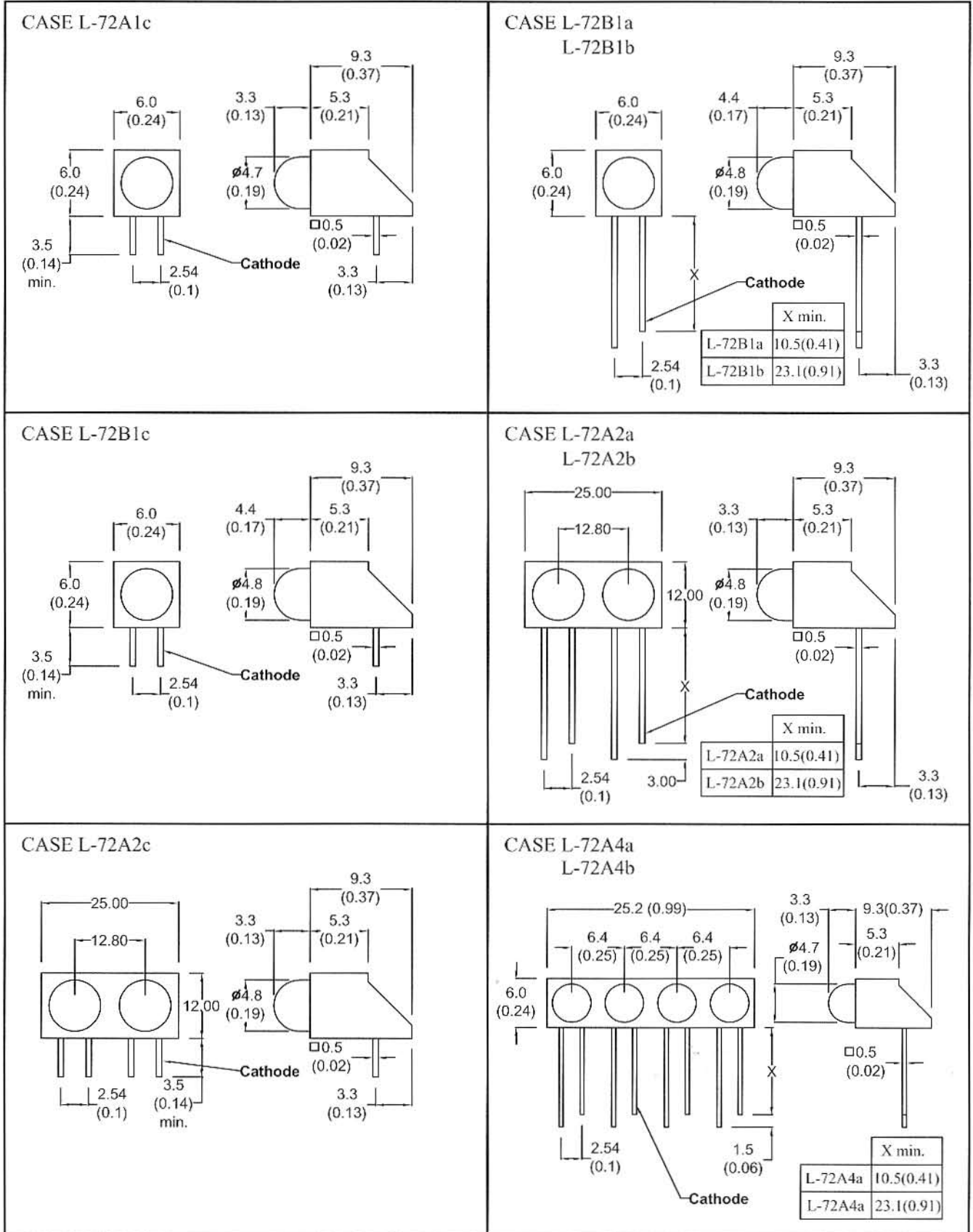
Unit : mm (inch), Tolerance : +/- 0.3mm (0.012inch), No scale

# Mechanical Outlines - LED



Unit : mm (inch), Tolerance : +/- 0.3mm (0.012inch), No scale

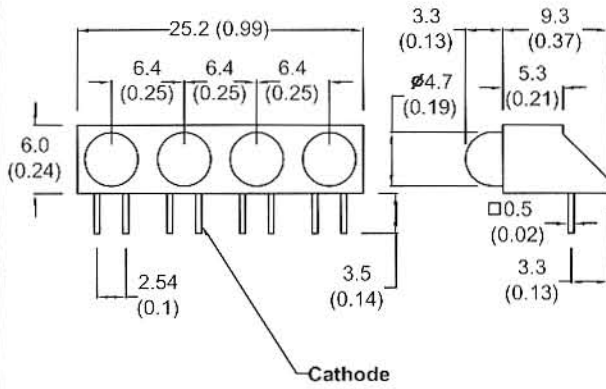
# Mechanical Outlines - LED



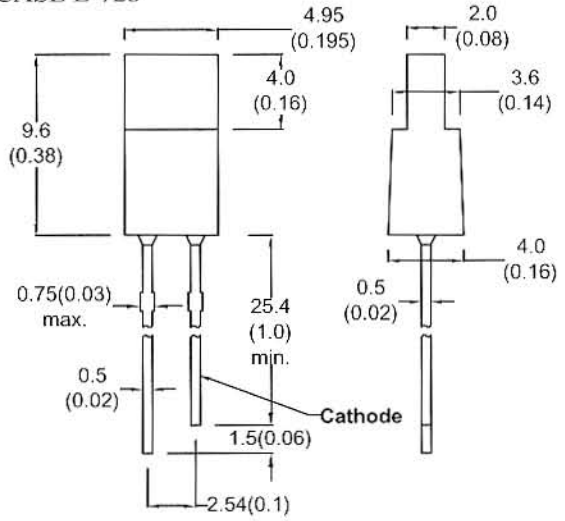
Unit : mm (inch), Tolerance : +/- 0.3mm (0.012inch), No scale

# Mechanical Outlines - LED

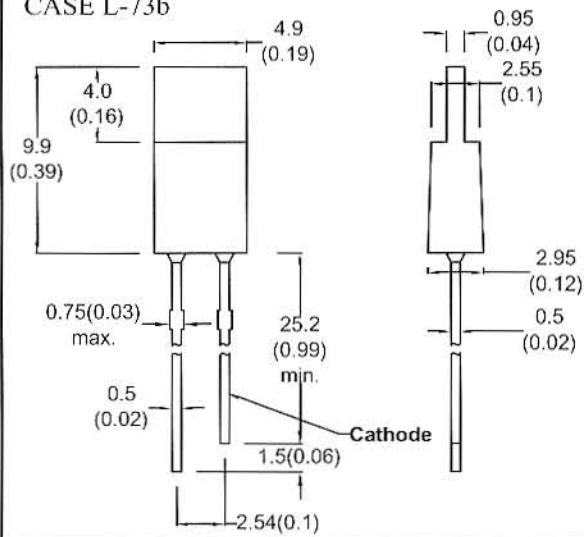
CASE L-72A4c



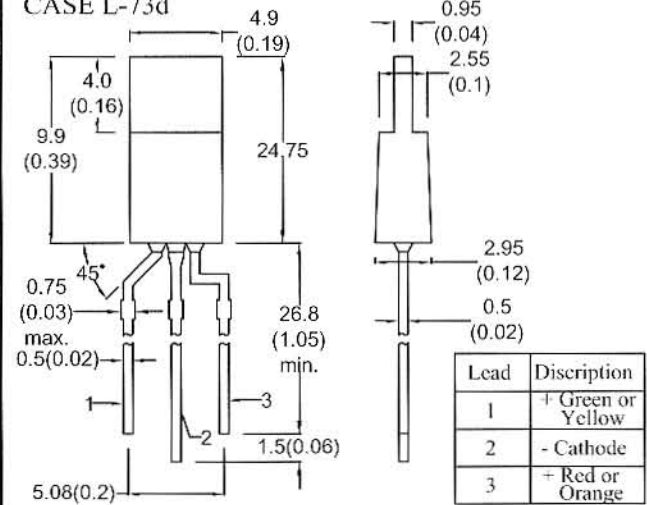
CASE L-72b



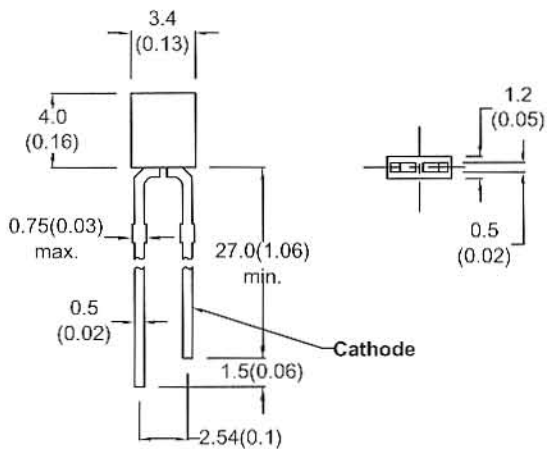
CASE L-73b



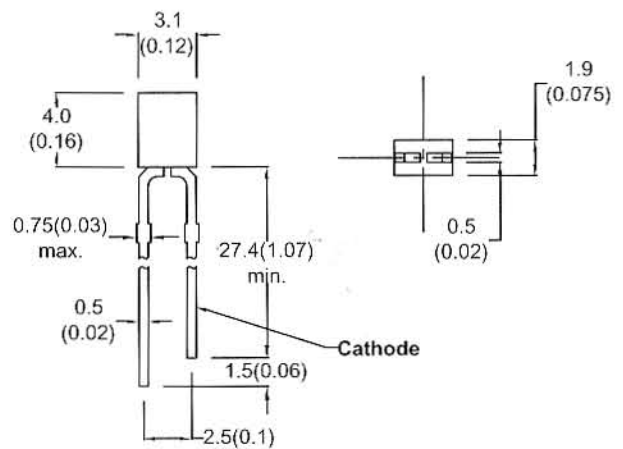
CASE L-73d



CASE L-74b

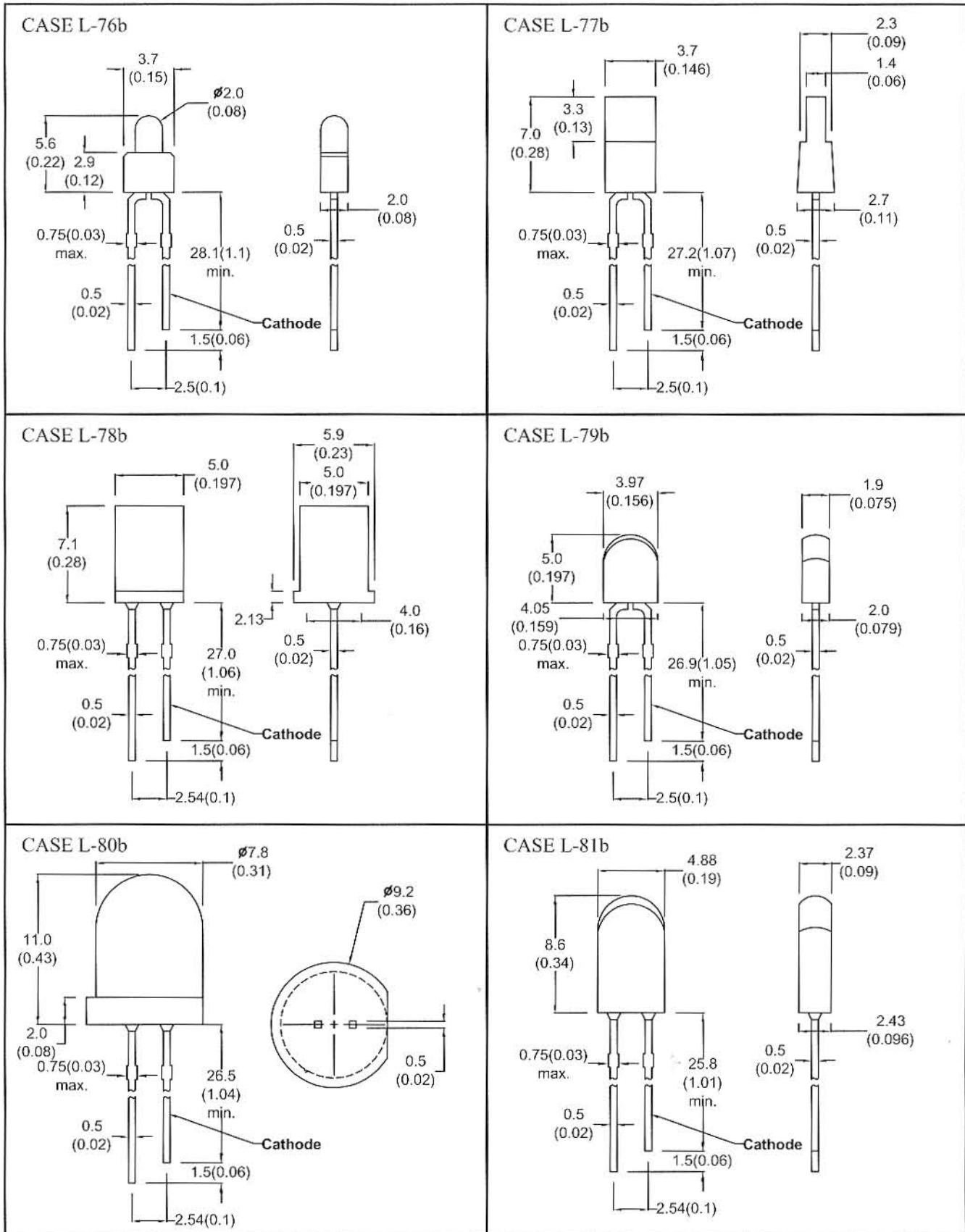


CASE L-75b



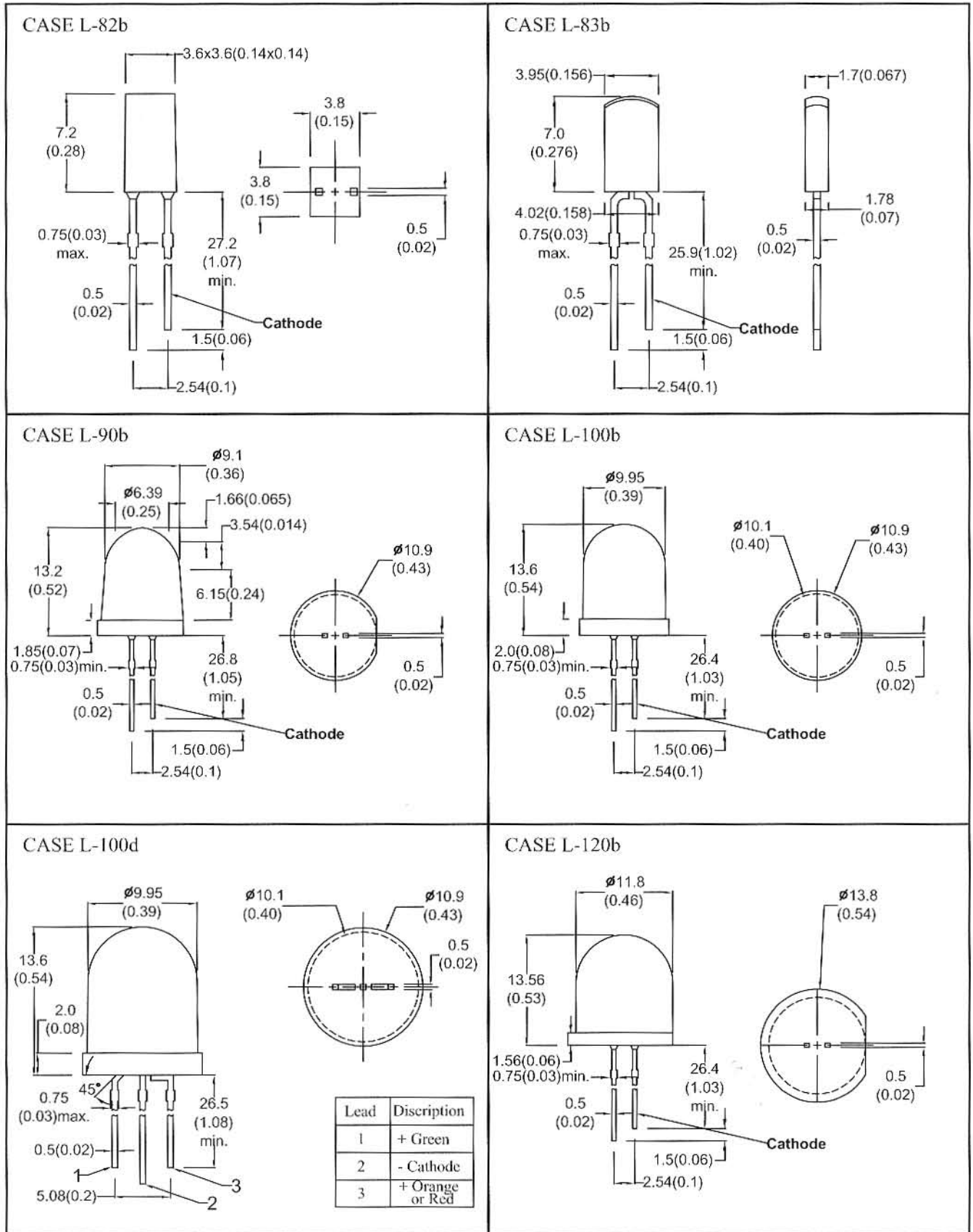
Unit : mm (inch), Tolerance : +/- 0.3mm (0.012inch), No scale

# Mechanical Outlines - LED



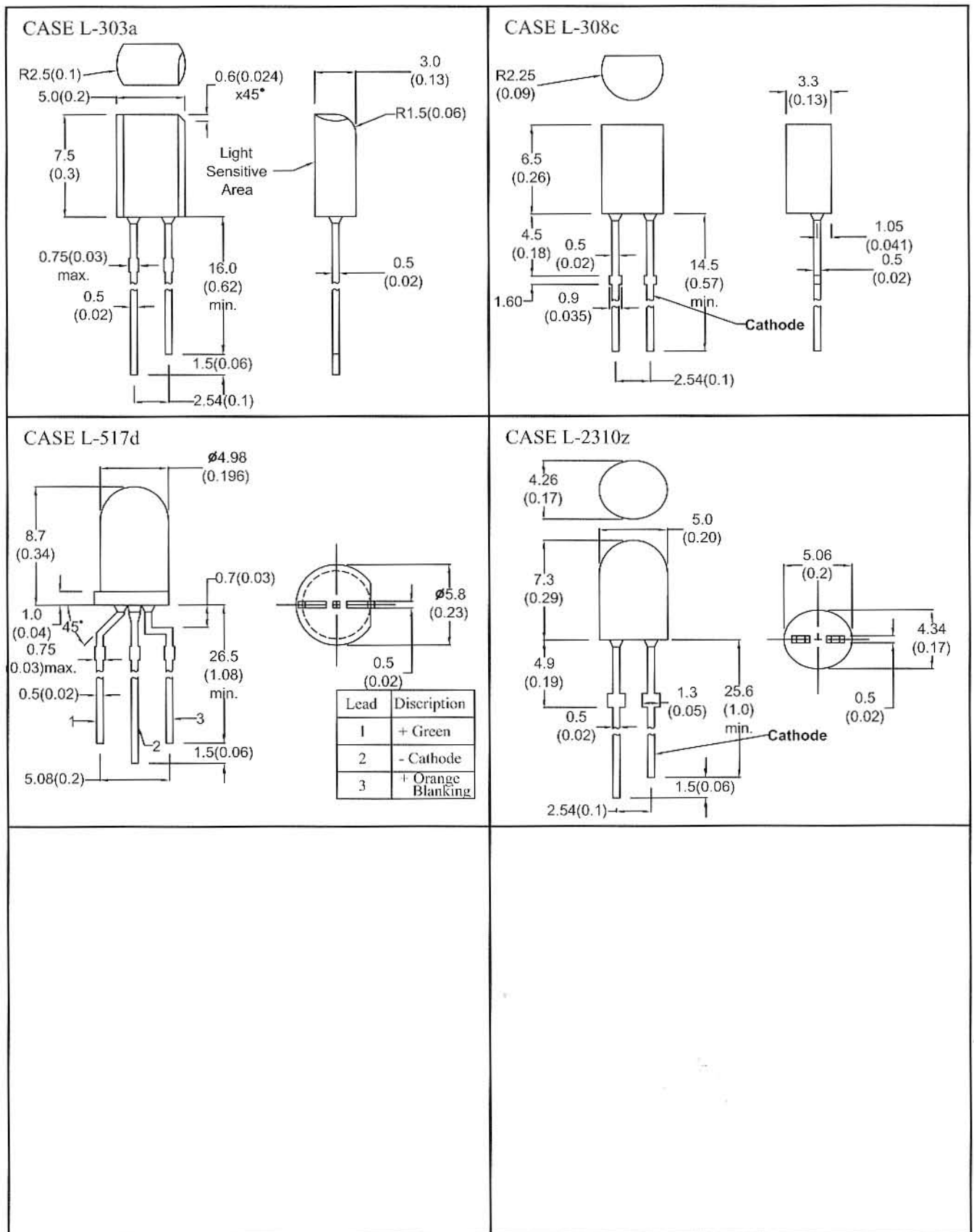
Unit : mm (inch), Tolerance : +/- 0.3mm (0.012inch), No scale

# Mechanical Outlines - LED



Unit : mm (inch), Tolerance : +/- 0.3mm (0.012inch), No scale

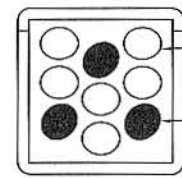
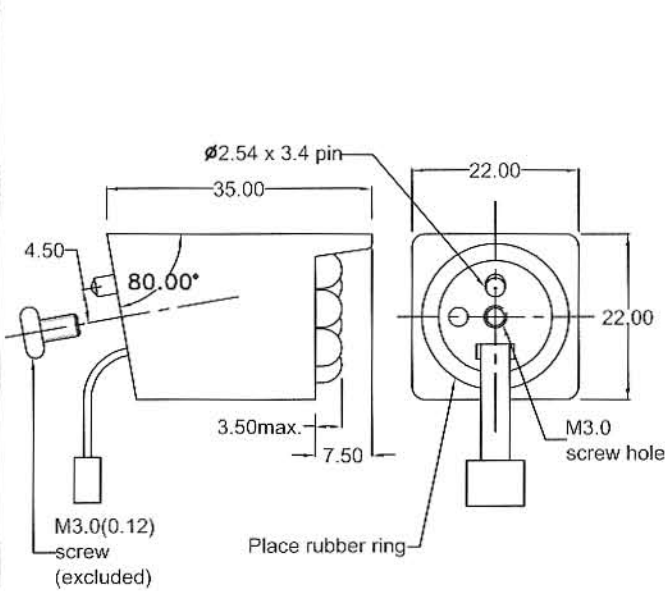
# Mechanical Outlines - LED



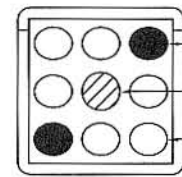
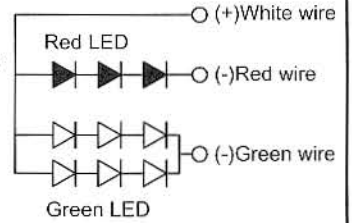
Unit : mm (inch), Tolerance : +/- 0.3mm (0.012inch), No scale

# Mechanical Outlines - LED Cluster Lamp

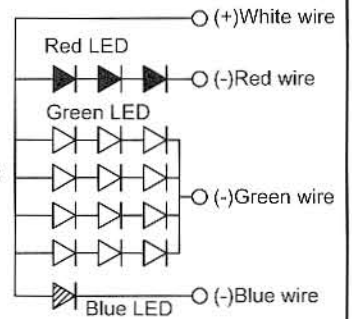
CASE L-9cb  
L-9cc



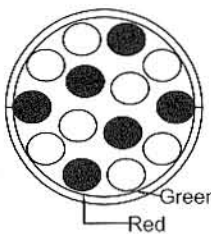
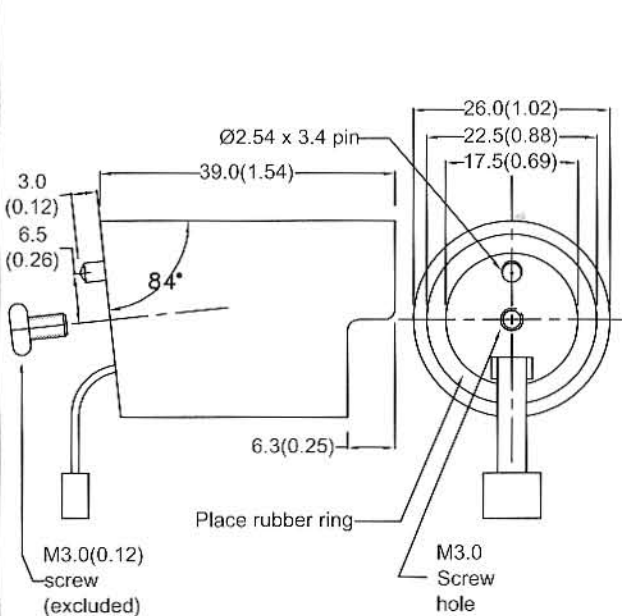
C-9cb LED Layout



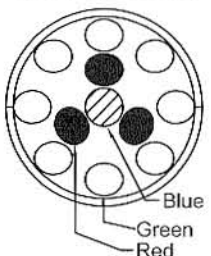
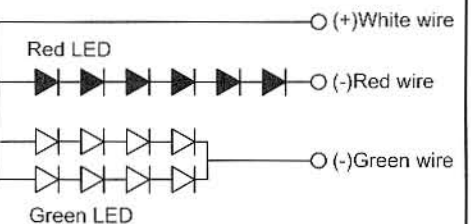
C-9cc LED Layout



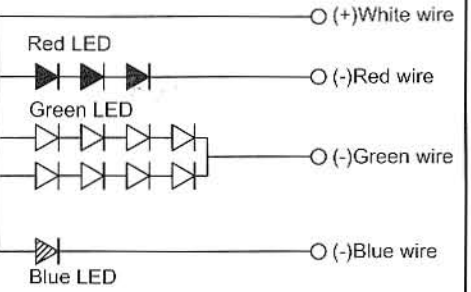
CASE L-14cb  
L-12cc



C-14cb LED Layout

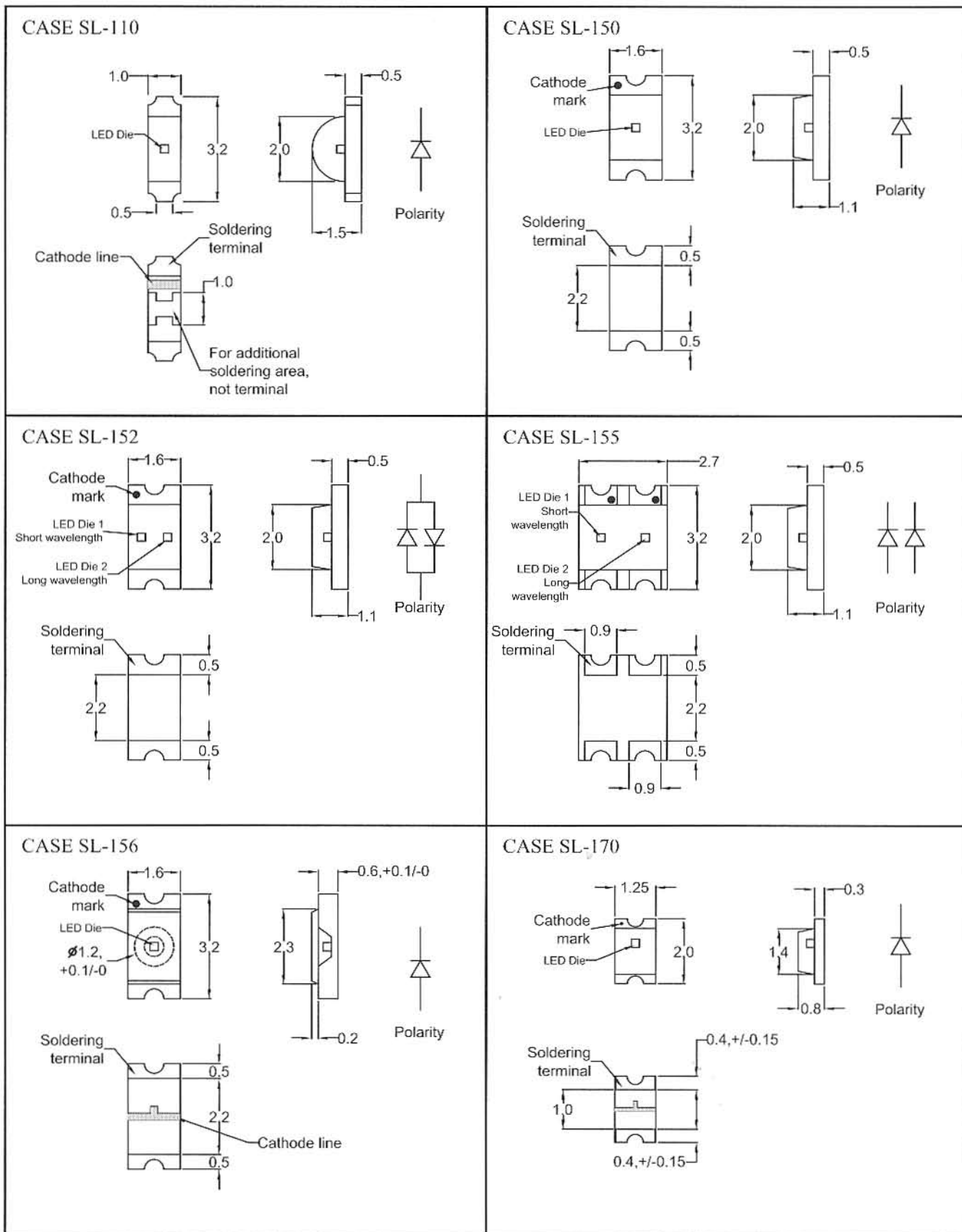


C-12cc LED Layout



Unit : mm (inch), Tolerance : +/- 0.3mm (0.012inch), No scale

# Mechanical Outlines - SMD LED



Unit : mm (inch), Tolerance :  $\pm 0.3\text{mm}$  (0.012inch), No scale  
 For details, refer to datasheets.

# Mechanical Outlines - SMD LED

<p>CASE SL-190</p> <p>Cathode mark</p> <p>LED Die</p> <p>0.8</p> <p>1.6</p> <p>0.3</p> <p>1.0</p> <p>0.8</p> <p>Polarity</p> <p>Soldering terminal</p> <p>0.4</p> <p>1.0</p>	<p>CASE SL-191</p> <p>Cathode mark</p> <p>LED Die</p> <p>0.8</p> <p>1.6</p> <p>0.3</p> <p>1.0</p> <p>0.8</p> <p>Polarity</p> <p>Soldering terminal</p> <p>0.4</p> <p>1.0</p>
<p>CASE SL-350</p> <p>LED Die 1</p> <p>LED Die 2</p> <p>LED Die 3</p> <p>2.7</p> <p>1.5</p> <p>1.1</p> <p>3.2</p> <p>0.5</p> <p>2.0</p> <p>1.1</p> <p>1</p> <p>2</p> <p>3</p> <p>4</p> <p>B</p> <p>R</p> <p>G</p> <p>Polarity</p> <p>Soldering terminal</p> <p>1.1</p> <p>0.7</p> <p>1.8</p> <p>0.7</p> <p>0.5</p>	

Unit : mm (inch), Tolerance : +/- 0.3mm (0.012inch), No scale  
 For details, refer to datasheets.